

Car Tire Spreader

Instruction Manual



CAUTION

- ◆ Before using the product, insure that carefully read and fully understand the instructions manual and all stickers note on he product. This is necessary to avoid injury to the operator and amage to the product.
- ◆ Use this product only for spreading tire and repairing the tire protective wrap. Do not use this product for any other purpose. Our company will not be responsible for the problems caused by any wrong operation.
- ◆ Keep the hook and claw of machine to be clean during working, Clean the extraneous matter such as grease in order to avoid injury to the operator caused by slide.
- ◆ Do not use this product if it is visibly worn, distorted or damaged, deal with it according to the local rules and regulations on waste disposal.
- ◆ In order to avoid hurting the eyes by the sundries during repairing process, always operates this product by the professional operators and wears appropriate eye protection.

Product Illumination

Vertical pneumatic car tire spreader special design for fixed the tires and spreading the tires during repairing cars and small trucks, microbus, in order to work for the tire polishing, cleaning and films affixed etc, equipped with work light and tools rack to improve work efficiency, enable the tire repairing work to be more convenient and faster. Manifest personalized design.

Technical Parameter

Be propitious to:

Tire width: 145MM—275MM

Tire diameter: 11"—24"

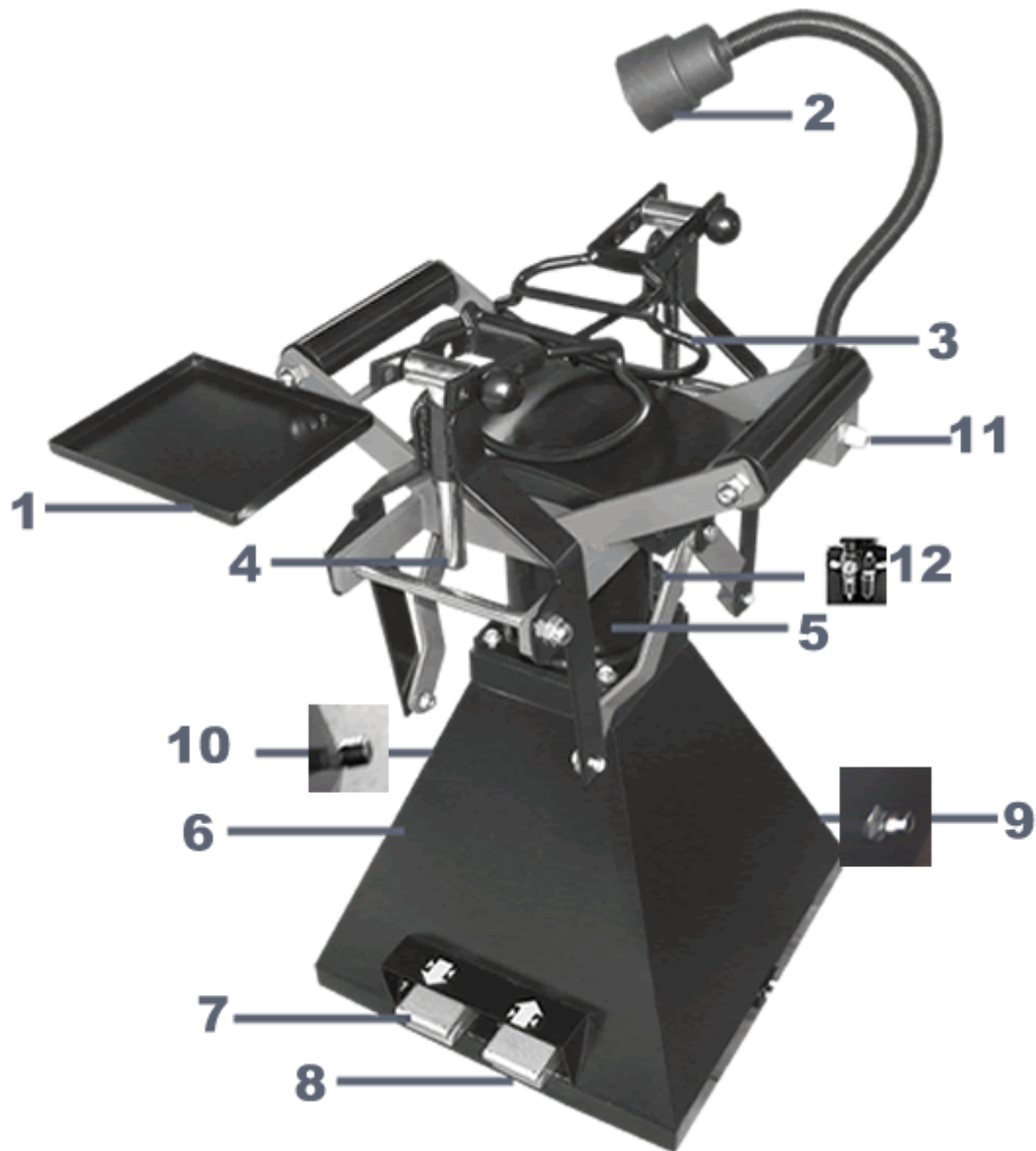
Work Voltage:

Input voltage: 220V 50/60HZ

Work light voltage: 12V

Air pressure: 6-8 KG/CM²

Product Configuration Drawing



- | | | |
|--------------------------|---------------------------|--------------------|
| (1) Tools Tray | (2) Work Light | (3) Spreading Hook |
| (4) Orientation Pin | (5) Power | (6) Body |
| (7) Descend Foot Valve | (8) Ascend Foot Valve | |
| (9) Pneumatic Pump Union | (10) Pneumatic Tool Union | |
| (11) Main Body Power | (12) Air Regulator Device | |

INSTALLATION

- 1、 Place this product on solid ground and keep its flat. fixed it on the floor is recommended.
- 2、 Fixed work tray to the machines with bolts like picture shows.



- 3、 Install the spreading hook on the machine with orientation pin like picture shows



- 4、 Attach a 1/4 NPT quick coupler nipper (not provide) into the fitting located on the treadle valve assembly. Use 1/4 inch air nose with 100 p.s.i. minimum. Like picture shows



Operation

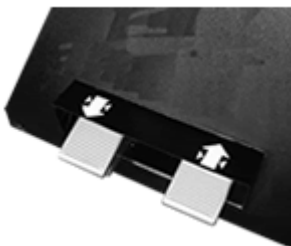
- 1、 Before start the machine, check carefully whether the fasteners on the machine are loose or not because of transportation. If yesterday, must be re-tightened.
- 2、 Fix the tire on the tire spreader with claw by hand.



- 3、 According to the size of tire which need be repaired to adjust the spreading claw to be the appropriate height. Place the spreading hook to be link pin of the hanging device. Adjust the spreading hook, move the link pin and spreading hook up and town in order to insert into one of adjusting holes which totally have four groups.



- 4、 Pedal the ascend foot valve, spread the tire to be the required width. If the tire in the process of spreading, were raised so high that break away from machine, it proves that the spreading hook arm is too high and need to be reduce its height to a normal position then can work again.



5、 Tires need to be rotated to a new location, stamp the descend foot valve firstly to release air pressure till the spreading hook loose, then put the tire on the machine rotary to find out a suitable location. Then repeat the above operation 4 for spreading tire.



6、 The work light equipped with the machine also needs to be adjusted to the most suitable location for the full illumination, easy maintenance work.

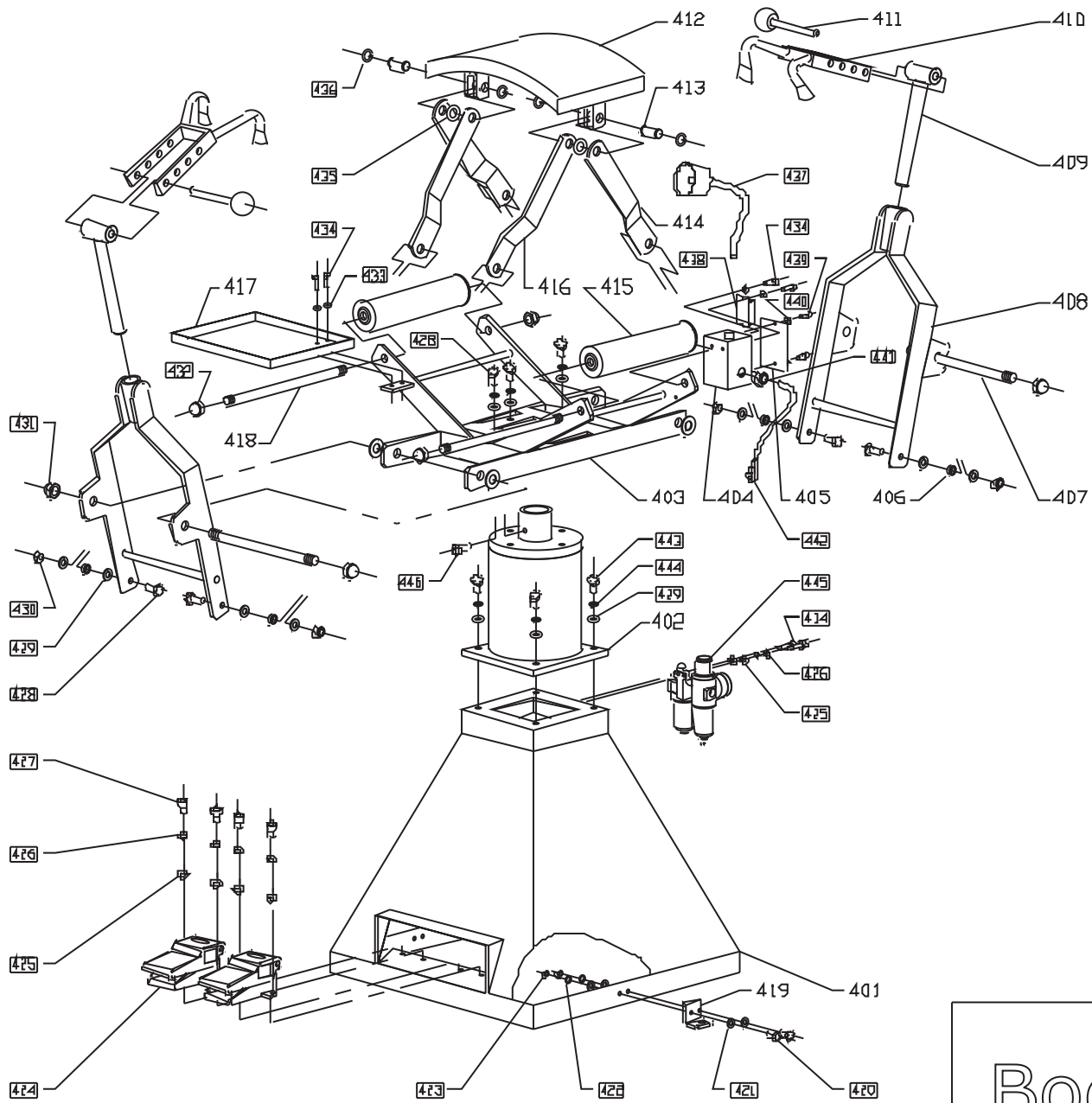


7、 When finished repairing tires, step down the descend foot valve to release air pressure, spreading hook releasing then demount the tire from machine.



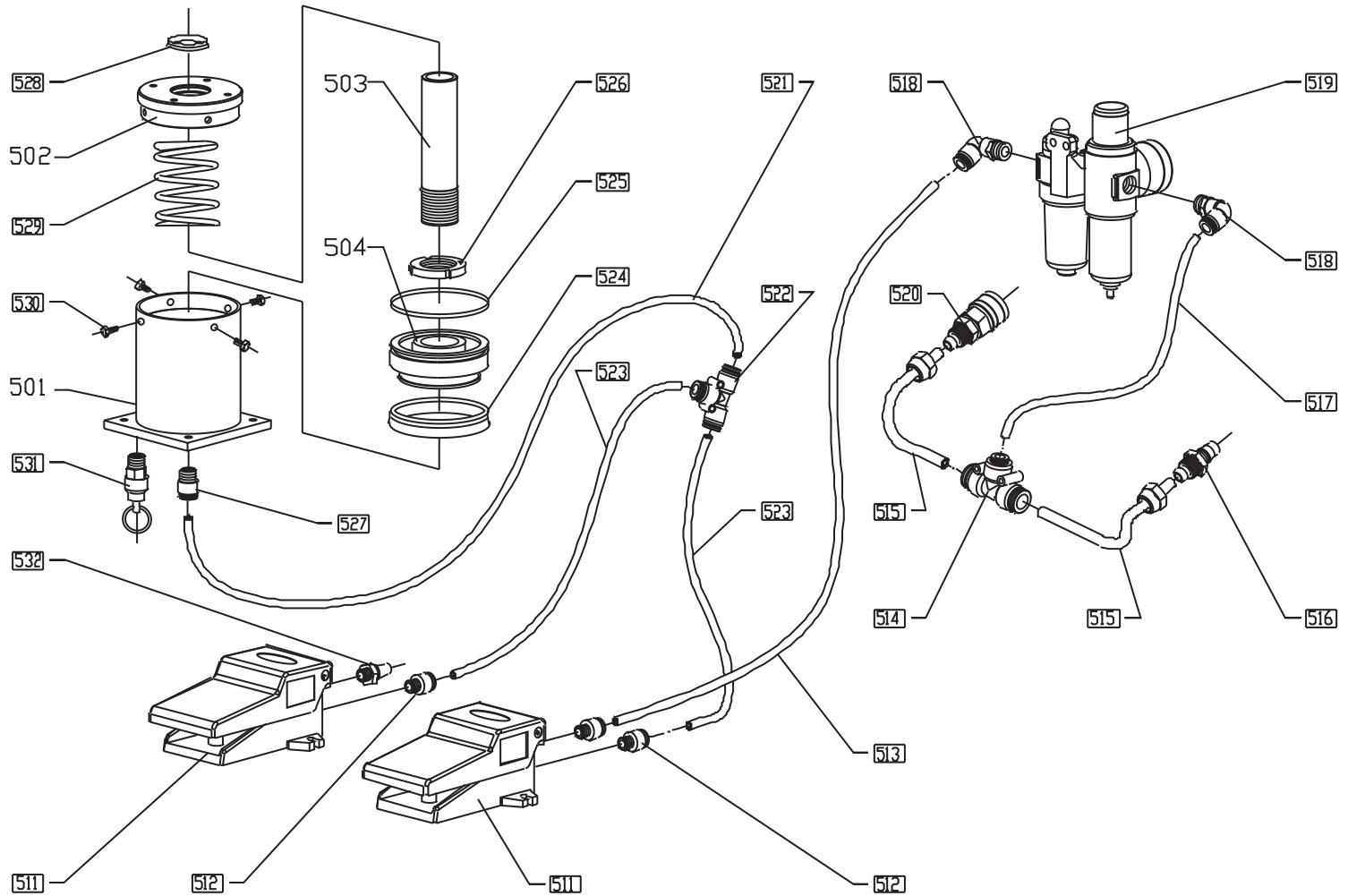
Maintenance

- ◆ Add the lubrication oil to the oil cup in time, always guarantee that the oil quantity in the cup to be occupy $1/3$ - $2/3$ of the total volume. Adjust drip oil speed, piston reciprocating run every 5 ~ 6 times for drip one blob oil for standard. ensure the oil pathway lubricate fully.
- ◆ clear away the dust and sundries always, check whether the fastener is loose or not.
- ◆ Drip oil to the piston rod and the various parts of pin regularly. Reducing friction, extending machine life.



Body Assembly

NO	CODE	description	quantity
401	110000	Main Body	1
402	200000	Cylinder	1
403	310000	Bracket	1
404	380000	Power box	1
405	380003	Box cover	1
406	300003	sheath	4
407	300005	Staff 1	2
408	320000	Waver rack	2
409	330000	Shaft	2
410	340000	Spread hook	2
411	370000	Align pin	2
412	350000	Coping	1
413	300004	Coping shaft	2
414	300002	Connect board 2	2
415	360000	Bracket unite element	2
416	300001	Connect board 1	2
417	300007	Tool salver	1
418	300006	Staff 2	2
419	100001	Corner angle iron	2
420		Hexangular bolt M6X16	4
421		Even gasket 6	8
422		Spring gasket 6	4
423		Hexangular nut M6	4
424		Step valve	2
425		Big even gasket 5	2
426		Spring gasket 5	6
427		Column hexangular bolt M5X16	8
428		Hexangular bolt M10X25	8
429		Even gasket 10	8
430		Cease nut M10	16
431		Cover nut M16	4
432		Hexangular nut M5	4
433		Even gasket 5	2
434		Cover nut M14	4
435		Even gasket 16	6
436		Shaft pring block ring16	4
437		Working light	1
438		Column hexangular bolt M5X10	2
439		Crossed setboltM4X8	2
440		Transformer	1
441		Even gasket 4	2
442		Across line	1
443		Power line	1
444		Hexangular bolt M10X30	4
445		Column hexangular bolt M8X16	1
446		Spring gasket 10	8
447		Oil-water separator	1



Pneumatics Assembly

NO	CODE	DESCRIPTION	QUANTITY
501	210000	Cylinder	1
502	200003	Cylinder cover	1
503	200002	Piston staff	1
504	200001	Piston	1
511		Step valve	2
512		Direct tie-in	3
513		PU pipe	2
514		red-tee	1
515		PU pipe	2
516		Metal speediness tie-in	1
517		PU pipe	1
518		Right angle tie-in	2
519		Oil-water separator	1
520		Metal speediness tie-in	1
521		PU pipe	1
522		Straight tee	1
523		PU pipe	1
526		PU pipe	1
527		PU pipe	1
528		Y- windtight ring	1
529		O- windtight ring	1
530		Circinal nut M56X2	1
531		Dustproof ring	1
532		constringent spring	1
533		Hexangular bolt M10X16	4
534		Safety valve	1
535		Silencer	1